

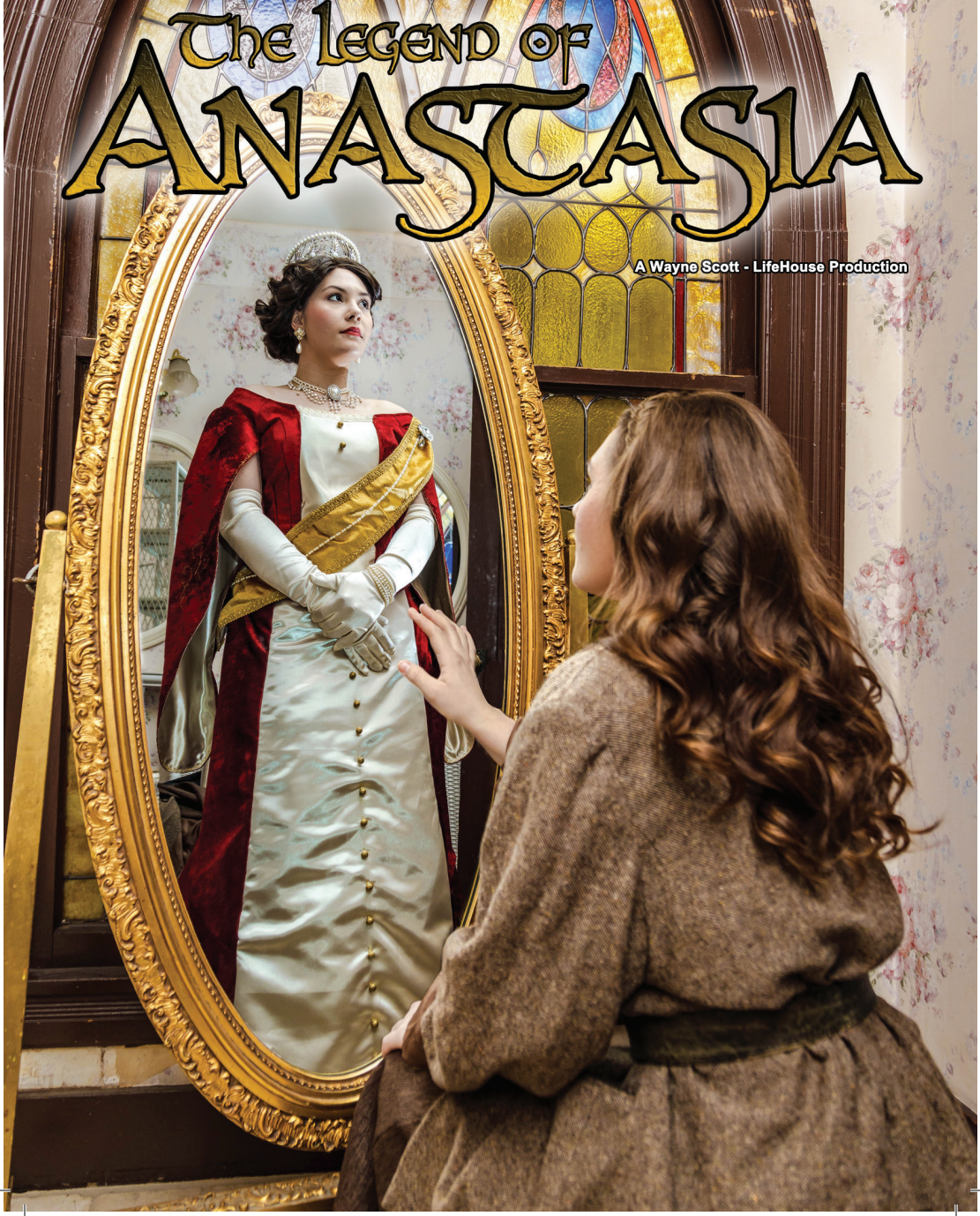
# LifeHouse Theater

*Making A Dramatic Difference*

Proudly Presents

# The Legend of ANASTASIA

A Wayne Scott - LifeHouse Production





## **Gary H. Chan, DDS, FADSA**

**Oral and Maxillofacial Surgery  
Dental Anesthesiology**

Welcome to the 29th Season - A Season of New Beginnings at LifeHouse Theater! If you are here for the first time or returning—quality entertainment awaits! Whether musical or drama, you will appreciate the unique creativity of LifeHouse productions. We are proud to support LifeHouse Theater and hope that you will tell others and enjoy many more memorable experiences here throughout the 2022-2023 season.

Under the masterful leadership of Wayne Scott, and tireless enthusiasm of dedicated volunteers, LifeHouse Theater is energizing audiences that enjoy unique, creative productions. Performances portray everyday life or fanciful, imaginary places, conveying themes of love, courage, faith, and hope—highlighting the very best in family entertainment.

Our hope is that you would be refreshed, encouraged, and richly blessed by LifeHouse Theater. May we endeavor to care more about value than success, have convictions rather than preferences, and be the evidence of a loving, caring, and forgiving God...to a watching world.

- **Wisdom Teeth Extractions**
- **Orthodontic Extractions**
- **Dental Implants**
- **Oral Biopsies**
- **Facial/Oral Trauma**
- **IV Sedation**
- **General Anesthesia**
- **Nitrous Oxide**

**Phone (909) 798-6600    Fax (909) 798-0028**  
**233 Cajon Street, Suite 4 • Redlands, CA 92373**

Currently, Dr. Chan serves as the president of the California Dental Society of Anesthesiology. He is the immediate past president of the National Dental Board of Anesthesiology. He also was president of the Loma Linda University School of Dentistry Alumni Association. He is a fellow of the American Dental Society of Anesthesiology, a diplomate of the American Dental Board of Anesthesiology, a diplomate of the National Dental Board of Anesthesiology, and a member of the American College of Maxillofacial Surgeons and the American Association of Oral and Maxillofacial Surgeons. He has been the guest editor of the Journal of the California Dental Association. He also teaches at Loma Linda University. His six years of postgraduate training at Loma Linda University included a four-year Oral and Maxillofacial Surgery residency in addition to a two-year Dental Anesthesiology residency.



**[www.ChanOralSurgery.com](http://www.ChanOralSurgery.com)**



---

---

# LIFEHOUSE THEATER

1135 N. Church St. • Redlands, CA 92374

---

April 15 - May 14, 2023

## The Legend of Anastasia

**WAYNE R. SCOTT**

*Executive Producer*

*Script, Music and Lyrics by SARAH E. PEARCE*

*Inspired by the Story of the Grand Duchess Anastasia Nikolaevna of Russia*

**SARAH E. PEARCE** • *Director*

**GIULIA BRATOSIN** • *Music Director*

**JENNIFER M. DEWITT** • *Choreographer*

**BETH DERRY** • *Costumer*

### The Players

*(In Order Of Appearance)*

Anya.....	<i>Kristiana McKelvey</i>	Kira.....	<i>Allyssa Entz</i>
Alexei.....	<i>Jordan Haro</i>	Lev.....	<i>William Argentine</i>
	<i>(April 21 - 23) Michael Milligan</i>	Nikola.....	<i>Isabella James</i>
Irena.....	<i>Nicole Prusa</i>	Natalya.....	<i>Cambria Prusa</i>
Rasputin.....	<i>Jeremy Yeo</i>	Viktor.....	<i>Ethan Evans</i>
Boris.....	<i>Jacob Michel</i>	Anton.....	<i>Luke Michel</i>
Eva.....	<i>Goldie Combs</i>	Sasha.....	<i>Josiah Evans</i>
Pavel.....	<i>Cyrus Duffly</i>	Dowager Empress Maria Feodorovna.....	<i>Jennifer Keeney</i>
Vera.....	<i>Cate Groza</i>	Luka.....	<i>Ed Derry</i>

### ENSEMBLE

*Emery Ard  
Rebecca Argentine  
Koa Cohen  
Ethan Derry  
Haley Derry  
Jordan Evans  
Nathaniel Evans  
Jessica Folkens  
Jordan Foss*

*Ruth Frasch  
Sophia Frazier  
Denise Garcia  
Elise Gregory  
Jubilee Henry  
Trinity Henry  
Paul Jackson  
Jaden Melashenko  
Tiffany Michel*

*Laurel Mitchell  
Jill Purczynski  
Isabella Rodriguez  
Mireya-Selene Rodriguez  
Gail Skiles  
Stephen Skiles  
Ava Steenhausen  
Katie Thorp  
Nina Torres*

---

---

## NOTICE TO GUESTS

- **Kindly refrain from talking.** Adults are asked to closely monitor their young children.
- **Kindly turn off cell phones and any other modern mechanical intrusions.**
- **No photography, filming, or recording is permitted without LifeHouse Productions' written consent.**
- **Kindly keep aisles clear and remain seated during the production.**
- **No smoking, food, drinks, or gum in the theater.**
- **Latecomers are seated at usher's discretion only.**

# Full Service Accounting & Wealth Management



**Ronald L. Mitchell, CPA**  
**Laura Hood, CPA**  
**David Massongill, Financial Advisor**

❖ Full-service Accounting ❖ Wealth Management  
❖ All Federal and State Tax Returns

222 East Olive Avenue, Suite 1 ❖ Redlands, CA 92373  
909-307-1210 ❖ 909-790-2363 ❖ 909-790-8005

*Securities offered through Securities America, Inc. Member FINRA/SIPC. Advisory services offered through Securities America Services, Inc. Massongill Wealth Management and Securities America are separate entities.*



**Dr. Rick J. Nichols, DDS**  
**Dr. Raelene Fulford, DDS, MSD**

**Dr. Rick Nichols, DDS**

[www.just4kidsdentistry.com](http://www.just4kidsdentistry.com)

Phone: (909) 798-0604

Fax: (909) 798-9765

104 E. Olive Ave  
Suite 200  
Redlands, CA  
92373

## Dolen, Tucker, Tierney & Abraham



*A Professional Law Corporation*

1710 Plum Lane, Suite A  
Redlands, CA 92374

[www.redlands-law.com](http://www.redlands-law.com)

[info@redlands-law.com](mailto:info@redlands-law.com)

(951) 683-6014 • (909) 217-7688



Raymond  
Dolen



Wayne  
Tucker



James  
Tierney



Rene  
Abraham

### *Our Specialties:*

- Plaintiff Personal Injury
- Bankruptcy / Debt Relief
- Estate Planning
- Probate & Trust Administration
- Public Entity & Business Litigation



---

# SYNOPSIS OF SONGS

---

## The Legend of Anastasia

### ACT I

#### OVERTURE

“Streets of St. Petersburg”.....	<i>Anya, Alexei, Citizens</i>
“Streets of St. Petersburg” (reprise).....	<i>Anya, Alexei, Citizens</i>
“My Mother Named Me Boris”.....	<i>Boris</i>
“Revenge”.....	<i>Rasputin, Boris</i>
“This Place Where I Belong”.....	<i>Anya</i>
“Strong, Firm, Steadfast”.....	<i>Irena, Anya</i>
“Run Away”.....	<i>Alexei</i>
“Lavender and Spice”.....	<i>Citizens</i>
“This Place Where I Belong” (reprise).....	<i>Anya</i>
“Life in the Palace”.....	<i>Servants, Aristocrats</i>
“Revenge” (reprise).....	<i>Rasputin, Boris</i>

### INTERMISSION

### ACT II

#### ENTR’ACTE

“Celebration”.....	<i>Citizens</i>
“Celebration” (reprise).....	<i>Citizens</i>
“Miracles Happen”.....	<i>Anya, Alexei</i>
“Change in Me”.....	<i>Alexei</i>
“Life in the Palace” (reprise).....	<i>Servants, Aristocrats</i>
“I Remember”.....	<i>Anya</i>
“To Dance is to Live”.....	<i>Servants, Aristocrats</i>

#### FINALE

“Miracles Happen” (reprise).....	<i>Anya, Alexei</i>
“Streets of St. Petersburg” (reprise).....	<i>Anya, Alexei, Citizens</i>

# The NAME You CAN Trust!

Family Owned & Operated

The Legend of  
**ANASTASIA**

**BURGESON'S**  
HEATING • A/C • ELECTRICAL  
SOLAR • PLUMBING

Since 1949

State Lic 263871

909-792-2222 [burgesonsons.com](http://burgesonsons.com)



Code:LHT

  
Redlands Professional  
HEARING CENTER  
Michael D. Boersen, H.A.D.

Affordable Hearing Aids & Compassionate Care  
*From our Family to Yours!*



DISCREET | RECHARGEABLE | BLUETOOTH COMPATIBLE



(909) 792-0074

[www.redlandshearing.com](http://www.redlandshearing.com)

16 E. Fern Ave. Suite C  
Redlands, CA 92373

**Edward Jones**

> [edwardjones.com](http://edwardjones.com) | Member SIPC

## Compare our CD Rates

Bank-issued, FDIC-insured

9-month

**5.15**

%  
APY\*

1-year

**5.25**

%  
APY\*

2-year

**5.25**

%  
APY\*

Call or visit your local financial advisor today.



**Paul A Mendonca**  
Financial Advisor

1690 Barton Rd Suite 101  
Redlands, CA 92373  
909-793-0018

\* Annual Percentage Yield (APY) effective 03/15/2023. CDs offered by Edward Jones are bank-issued and FDIC-insured up to \$250,000 (principal and interest accrued but not yet paid) per depositor, per insured depository institution, for each account ownership category. Please visit [www.fdic.gov](http://www.fdic.gov) or contact your financial advisor for additional information. Subject to availability and price change. CD values are subject to interest rate risk such that when interest rates rise, the prices of CDs can decrease. If CDs are sold prior to maturity, the investor can lose principal value. FDIC insurance does not cover losses in market value. Early withdrawal may not be permitted. Yields quoted are net of all commissions. CDs require the distribution of interest and do not allow interest to compound. CDs offered through Edward Jones are issued by banks and thrifts nationwide. All CDs sold by Edward Jones are registered with the Depository Trust Corp. (DTC).

# 29TH SEASON

## THE HUNCHBACK OF NOTRE DAME

MAY 27 - JUNE 25, 2023



JULY 8 - AUG. 6, 2023



AUG. 19 - SEPT. 17, 2023

*TITLES, DATES AND TIMES SUBJECT TO CHANGE*

### thrivent®

It's all about the when.

**Social Security is a vital income source— but timing is everything.**

But it can be a confusing topic, and making the most of it has a lot to do with when you apply for benefits. Attend Social Security: Timing Is Everything to get answers to your questions, and learn what Social Security can mean for you.

- When should I apply for Social Security?
- How can I maximize my benefits?
- How will this affect my spouse?



Event details

Monday, April 24, 2023  
6:30 p.m.  
Lifeshouse Theater  
1135 Church St  
Redlands, CA



Thrivent financial advisors and professionals have general knowledge of the Social Security tenets. For complete details on your situation, contact the Social Security Administration.  
No products will be sold.



**Cruises ♦ Land Tours**  
**Vacations ♦ Reunions**



No matter the type of trip you're looking for, **Joe & Sandy Ellis** can help you plan it. Contact us to explore your next adventure!

Call: 909-855-3612 | Or email: [joe@ellistravelcompany.com](mailto:joe@ellistravelcompany.com)

Ellis Travel is affiliated with Goldrush Getaways | CST: 2055171-40 IATA: 05765734



# LifeHouse Theater

*Making A Dramatic Difference*

## CELEBRATING 29 SEASONS OF MAKING A DRAMATIC DIFFERENCE

In 1993, Wayne Scott incorporated LifeHouse Theater as a non-profit community theater company. 29 years later, the theater has grown into an **Inland Empire attraction**, with an outreach that extends **worldwide**.

**LifeHouse is an award-winning, faith-based theater** guided by historic Judeo-Christian perspectives and values. Throughout these 29 years, LifeHouse Theater has produced over 50 original plays and musicals, adapting some of the most beloved stories from history, literature, and the Bible aimed at a new audience looking for quality entertainment that inspires the moral imagination. Highlights include "Phantom of the Opera," "Ben-Hur," "Beauty and the Beast," "The Hiding Place," "Anne of Green Gables," and "Joseph." Many **Broadway classics** have also been presented at LifeHouse Theater including "The Sound of Music," Disney's "Mary Poppins," "To Kill A Mockingbird," "My Fair Lady," "Seussical," and "Seven Brides for Seven Brothers."

**Unique in the nation**, LifeHouse is an independent, interdenominational theater whose plays and musicals are exclusive, original productions seen by over **30,000 guests** each year. More than **500 volunteer actors** comprise our casts of storytellers and join gifted artists, technicians and support staff from all walks of life to stage redemptive, inspirational stories.

The **outreach of LifeHouse spans the globe** through the **SmartLifeStyle TV** channel as a number of our original productions, as well as the original program "'A New Day' with Dr. Tammy," are broadcast internationally. Additionally, **LifeHouse Theater-on-the-Air** distributes original audio dramas on CDs and through digital downloads. **LifeHouse Scripts** license the scripts of LifeHouse Theater which produced throughout America and in countries all over the world.

LifeHouse Theater makes an **Inland Empire impact** as well, awarding thousands of dollars in **scholarships**, and giving complimentary passes to **charitable organizations** such as the Ronald McDonald House of Loma Linda, Salvation Army, and YouthHope.

A commitment to education continues at LifeHouse Theater through the **LifeTales educational musical biographies** for students, which have been performed for thousands of students and offer a fun, educational field trip opportunity for schools. LifeHouse has also partnered with Michael Milligan to offer the **StageRight and Team Broadway theater and dance classes** for children and adults.

LifeHouse Theater continues to have a strong presence **online**. In addition to our online ticketing site, information for LifeHouse can be found at [lifehousetheater.com](http://lifehousetheater.com), [theaterscript.com](http://theaterscript.com), [lifehouse.tv](http://lifehouse.tv), and [theaterontheair.com](http://theaterontheair.com). LifeHouse is also on social media through FaceBook, Instagram, Twitter, and Pintrest.

**LIFEHOUSE PRODUCTIONS INC.** is a family of creative artists from the Inland Empire. We are committed to producing dynamic, dramatic experiences championing the moral imagination as informed by Judeo-Christian traditions. LifeHouse is an independent non-profit corporation funded by ticket sales and the support of volunteers and community patrons.



---

## MESSAGE FROM THE PRESIDENT

---



Welcome to St. Petersburg, Russia, circa 1921, here at LifeHouse Theater! We're so glad you have joined us this weekend.

Today, we explore a legend of history while crafting a modern day fairy tale. We address the question, "What if the famous Anastasia had survived?" The sad historical reality is that the Grand Duchess Anastasia Romanov was killed with her family by a group of Bolsheviks in 1918.

But for years, persistent rumors of her possible escape circulated around the world—creating the legend that we base our story on today. We witness the search for young Anastasia Romanov and how her life might have looked had she survived one of the greatest tragedies Russia has ever endured.

In our new rendition of the legend, Anastasia must come to terms with what has happened to her family. Despite the injustice she has suffered, she learns to forgive. A beautiful picture of forgiveness is found in the biblical story of Esau (Genesis 33). Esau chose to forgive his brother Jacob—even though Jacob had stolen everything from him. But through the power of God's redeeming love, and Esau's willingness to forgive, two brothers and their families were reunited.

Join us now as we combine history and legend to share a unique and powerful story of forgiveness—and what it truly means to be adopted into the family of God.

And be sure to join us for the remainder of our exciting 29th season. You'll experience the inspiring return of "The Hunchback of Notre Dame," the delightful new Broadway favorite, Disney's "Newsies," and the uplifting biblical story of "Daniel." Pro-rated season passes are on sale now. Enjoy the savings and the season's stories as we share memorable theater together here at LifeHouse.

God Bless...

  
Wayne R. Scott, Founder and President  
LifeHouse Productions, Inc.

BOOKS BIBLES GIFTS APPAREL JEWELRY CARDS MUSIC DVDs



**25%**  
off any one  
regular-priced, in-stock  
item with this ad.  
One coupon per person.  
Expires 5/20/23



415 Tennessee Street  
Redlands 92373  
(909) 792-2175  
[www.selahchristianstore.com](http://www.selahchristianstore.com)

Your locally-owned, independent Christian store. Follow us on Facebook.



*Law Office of*  
**ROBERT KOCHIS**  
Certified Family Law Specialist

Robert A. Kochis

Certified Family Law Specialist

300 East State St., Suite 600 ♦ Redlands, CA 92373 ♦ 909.792.0222 ♦ 909.798.4716  
[WWW.ROBERTKOCHISLAW.COM](http://WWW.ROBERTKOCHISLAW.COM)

**FAMILY LAW ATTORNEY**



Call (909) 557-2800 or  
1-800-888-7551 or visit us at  
1200 California Street, Suite 220  
Redlands, CA 92374

**PAINTER  
SMITH &  
AMBERG**  
ESTABLISHED 1982  
MEMBER-FINRA, SIPC

**Full Service Stock and  
Bond Brokerage**  
**Registered Investment Advisor**

SECURITIES AND INSURANCE PRODUCTS OFFERED ARE NOT INSURED BY FDIC OR ANY FEDERAL GOVERNMENT AGENCY.  
MAY LOSE VALUE. NOT A DEPOSIT OF OR GUARANTEED BY A BANK OR ANY BANK AFFILIATE.

Accounts carried by Wells Fargo Clearing Services, LLC, a division of Wells Fargo Corp.

11/1/16



# PRODUCTION STAFF

Executive Producer.....	<i>Wayne R. Scott</i>
Producer.....	<i>Jeffrey A. DeWitt</i>
Artistic Director.....	<i>Michael Milligan</i>
Orchestration.....	<i>Mitchell Piantanida</i>
Assistant Director.....	<i>Holly Groza</i>
Assistant to the Director.....	<i>Cosette Groza</i>
Assistant Choreographer.....	<i>Micah Derry</i>
Additional Choreography by.....	<i>Michael Milligan</i>
Hair and Makeup.....	<i>Nicole Prusa</i>
Costuming Assistants.....	<i>Ed Derry, Haley Derry, Tisha Entz, Judy Frasch, Ruth Frasch, Tiffany Michel Carol Parks, Sarah Pearce, Tessa Van Gorp</i>
Props .....	<i>Jessica Folkens</i>
Scenic Design .....	<i>Jacob Michel</i>
Scenic Construction .....	<i>Jacob Michel, Luke Michel</i>
Scenic Painting.....	<i>Natalie Krutsinger</i>
Lighting Design.....	<i>Josiah Evans</i>
Tech Lead.....	<i>Natalie Krutsinger</i>
Lighting & Sound.....	<i>Kiley Aranda, Micah Derry, Ian Frazier, Joshua Isom Natalie Krutsinger, Isabelle Trani</i>
LifeHouse Publicity and Cast Photographers .....	<i>Jane Cason, Trish Evans, Elizabeth Kelly</i>
LifeHouse Promotional Videos.....	<i>Elizabeth Kelly, Mackenzie Marts</i>
Program .....	<i>Jeffrey A. DeWitt</i>
Special Thanks to .....	<i>Edwards Mansion, The Gregory Family, Coldwell Banker Kivett-Teeters Associates</i>

We wish to thank the many others “behind the scenes” who so graciously and generously give of their time to make our productions possible throughout the year.

## BOX OFFICE

1135 N. Church Street • Redlands, CA 92374 • (909) 335-3037

[lifehousetheater.com](http://lifehousetheater.com)

### Phone Reservations

Tues. - Fri.: 1pm - 5:30pm

### Lobby Hours

Fri: 1pm - 6pm

Weekends: 1 hour prior to performance and open throughout performance.

Founder/President / Executive Producer .....	<i>Wayne R. Scott</i>
Vice-President .....	<i>Dr. Tammy Bradshaw-Scott</i>
General Manager / Producer .....	<i>Jeffrey A. DeWitt</i>
Artistic Director .....	<i>Michael Milligan</i>
Scenic Director .....	<i>Jacob Michel</i>
President's Secretary / Volunteer Coordinator .....	<i>Jennifer Keeney</i>
Financial Coordinator .....	<i>Debbie Rao</i>
House Management .....	<i>Liz Boone</i>
Director of Advertising .....	<i>Joe Ellis</i>
Resident Prop Coordination .....	<i>Jessica Folkens</i>
Guest Relations .....	<i>Michelle Bland, Diane Coffman, Janna Redmond, Nancy Thorp</i>
Special Projects .....	<i>Aaron Milligan, Johanne Scott</i>

LIFEHOUSE ADVISORY BOARD: Wayne R. Scott, Dr. Tammy Bradshaw-Scott,  
Dr. Gary and Valerie Chan, Greg Franklin, Adam Groza,  
Mary Lynn Mollner, Zach Tucker, Jeremy Yeo (Cast Liaison)

## LIVE YOUR VALUES

- Individual, family, and couples therapy for all ages
- Psychological testing and evaluations
- In-person and telehealth appointments available



2900 Adams Street, Suite C-10  
Riverside, CA 92504

Office: 951.552.8137  
[www.psychservicesriverside.org](http://www.psychservicesriverside.org)

## Maupin's Money Maxim:

- *Spend less than you earn*
- *Save all you can*
- *When in doubt... Call me!*



*Maupin Financial Advisors*  
*David O. Maupin, CFP®*  
*LPL Registered Principal*

*Securities and advisory services offered through LPL Financial.*  
*A registered investment advisor, member FINRA/SIPC.*

310 East Citrus Avenue. Redlands, CA 92373

FOR MORE INFORMATION:

(909)-798-1712

[www.maupinfinancial.com](http://www.maupinfinancial.com)

[david.maupin@lpl.com](mailto:david.maupin@lpl.com)

# HELP US CHANGE A LIFE THROUGH THE ARTS

Your contribution helps ensure the Inland Empire will continue to have a theater that is committed to inspiring the minds of individuals, both young and old, by presenting artistic endeavors that inspire the human spirit. Join with others in our Family of Donors who have a vision for using the fine arts to make a difference.

<b>Producer's Circle:</b>	<b>\$10,000 &amp; Above</b>	<b>Actor's Circle:</b>	<b>\$700 - \$999</b>
<b>Playwright's Circle:</b>	<b>\$7,000 - \$9,999</b>	<b>Patron's Circle:</b>	<b>\$300 - \$699</b>
<b>Director's Circle:</b>	<b>\$4,000 - \$6,999</b>	<b>Friend's Circle:</b>	<b>\$100 - \$299</b>
<b>Artist's Circle:</b>	<b>\$1,000 - \$3,999</b>		

*Mail Your Investment to:*

LifeHouse Theater, 1135 N. Church St., Redlands, CA 92374 or call (909) 335-3037

## PRODUCER'S CIRCLE

*Anonymous Gary & Valerie Chan Dr. Hefsiba and Dr. Rodgir Cohen Dave & Robin Maupin*

## PLAYWRIGHT'S CIRCLE

*Anonymous*

## DIRECTOR'S CIRCLE

*Anonymous Dale & Kim Folkens Robert & Linda Rosenquist Redlands Community News -  
Julie R. Carlson Janna K. Redmond Mike & Myriam Trementozzi Jerry Bean*

## ARTIST'S CIRCLE

*Anonymous Mr. & Mrs. Diliberto Tina McClellan Lewis & Johanne Scott  
Rick & Tina Arias Ken & Suzy Douma Marty & Susy McLeod Jan Sherman  
Kristen Suzanne Atkinson Joe & Sandy Ellis Scott & Mary Lynn Mollner Sue Stuedemann  
Hayne & Rochelle Baucom Theophilus The Monsma Family Rich & Laural Tubbs  
Bart & Ruth Bliss The Franklin Family The Moore Family Neil & Grace Valkenburg  
Steve & Liz Boone The Gatons Family Phil & Carol Naylor Ralph & Pat Watts  
Peggy Bryson David Roy Hurley Judy Powers Dr. Bob & Sheila Wines  
The Bushey Family Anne Jackson Bruce & Candace Quinn William, Sally & Austin Ziprick  
Katrina Marie Cavarno-Cherns Rich & Char Lampe RB Foundation  
Jeff & Jennifer DeWitt Timothy & Jamie Mahoney Colossians 3:23  
Ed & Beth Derry The Manson Family In Memory of Matthew Schrader*

## ACTOR'S CIRCLE

*Anonymous Devoted & Valor Crother Kevin & Susan Jetton Larry & Carol Payne  
Regan Bliss George & Frankie Fikrie*

## PATRON'S CIRCLE

*Anonymous Rich Durant Larry & Susan Macri Mark & Darcelle Seller  
Bill & Betty Jane Born Amy Muthersbaugh Evans Mark Perrenoud & Family Bruce & Beth Smith  
Jean Burgdorff Jessica Folkens Philippe Perrenoud & Family Daphne Sterling & Family  
Raul & Tonia Caraveo Priscilla George John Potter Steve & Pat Timboe  
Bill & Linda Chatt Gary & Denise Harriford John & Johanna Rajca Paul & Zane Williamson  
Justin & Amanda Chao Paul & Teresa Hert Frank & Sandy Rich Bill & Dianne Wood  
Richard L. & Brenda Durant Nolan Livesay The Rossperencer Family Aaron Yañez*

## FRIEND'S CIRCLE

*Anonymous The English Family In Memory of Sid Martin Dan & Dawn Tan  
Maria R. Anderson The Flores Family Kenneth & Priscilla Newman Roger Tillman  
Donna Marie Becker Arthur Gallegos Shirley Proch Joshua Trunko  
Willie & Jackie Behrends Major Mrs. Glen Gilden The Mark See Family Zach, Berangere & Sophia Tucker  
Don Bell Claire Juliette Raymond & Dyone Sheldon Ruthemma & David Wells  
Manna-Fest Fellowship Todd Kessler & Maria Felipe Lucas & Heather Spelman In Memory of Dustin Wehrman  
Lory & Nelson Ely Jim & Sue Korfanta In Memory of Lorrie Stirling Craig & Donna Zuppan*

(As of February 2023)



# UPCOMING AUDITIONS

Auditions are held at LifeHouse Theater, 1135 N. Church St. in Redlands from 6 - 9 pm on a first come-first served basis. Parking is available behind the theater. Auditioners should be at least 10 years of age and have a recent photo of themselves and a theatrical resume to leave with the audition panel.

Please come to the audition prepared to sing 16 bars of the song of your choice, making sure to bring sheet music in the correct key. **\*For dramas, please prepare a dramatic monologue no more than one minute in length.** Roles are open for both men and women, all season long. Men are especially encouraged to audition. LifeHouse Theater is a service organization and we hope you'll consider devoting your time and talent to serve our community through the arts. *(Dates and Titles Subject to Change.)*

Newsies.....April 20, 2023 Daniel.....June 15, 2023

## orthodontics by Byron E. Diehl, DDS, MS



Call Us for Your  
Complimentary  
Consultation

104 E. Olive Avenue, Ste 204  
Redlands, California 92373

[diehlorthodontics.com](http://diehlorthodontics.com) 909.793.2827

## Securing Peace of Mind Today for Tomorrow



Kathleen B. Albrektson

1801 Orange Tree Lane,  
Suite 230  
Redlands, CA 92374  
(909) 335-9658

**AS ALBREKTSON &  
SHUMATE LLP**

Estate Planning, Probate,  
Trust Administration,  
Estate Litigation, Bankruptcy &  
Small Business Planning



Voted best  
attorney &  
best law  
firm since  
2011!



Christopher A. Shumate

(909) 335-9658  
[www.AibShuLaw.com](http://www.AibShuLaw.com)

Albrektson & Shumate LLP is  
federally defined as a debt relief agency.

# Legend of Anastasia

## Word Search

V N O S G M W E F A M I L Y S  
T R K E V I P O Y E Q A B R P  
K R P H M A W R X O X T Q U I  
Q K O E T P N J I A G O P S C  
H S R P T I R A W N P J X S E  
W L P L A E L E S L C P Q I I  
H E H R A L R Q S T L E L A L  
O G A A A V A S D S A W S E O  
M E N R L S E C B K N S U S S  
E N O C L E P N E U U B I X T  
O D B C R K X U D M R H P A S  
I Q O I M O O E T E T G M B Z  
N T B Z S C W D I I R P A E Z  
J H C F Z Y A N F N N B V W P  
G N G K R O Y A L T Y C A L Z

Anastasia

Apples

Empress

Legend

Home

Lost

Royalty

Rasputin

Lavender

Russia

Family

Spice

Orphan

Petersburg

Princess

Crown

Alexei

Palace



# BRIGGS — AND — COOPS

COINS · GOLD · SILVER · CURRENCY & STAMPS



PROUDLY SUPPORTING LIFEHOUSE THEATER

WE BUY AND SELL GOLD, SILVER, COINS,  
STAMPS, CURRENCY, AND SCRAP JEWELRY.

[www.CoopsCoins.com](http://www.CoopsCoins.com), 909-792-2511  
21 E. Redlands Blvd. Redlands CA