

# LifeHouse **LH** Theater

*Making A Dramatic Difference*

Proudly Presents

# NOAH





## **Gary H. Chan, DDS, FADSA**

**Oral and Maxillofacial Surgery  
Dental Anesthesiology**

Welcome to the 29th Season - A Season of New Beginnings at LifeHouse Theater! If you are here for the first time or returning—quality entertainment awaits! Whether musical or drama, you will appreciate the unique creativity of LifeHouse productions. We are proud to support LifeHouse Theater and hope that you will tell others and enjoy many more memorable experiences here throughout the 2022-2023 season.

Under the masterful leadership of Wayne Scott, and tireless enthusiasm of dedicated volunteers, LifeHouse Theater is energizing audiences that enjoy unique, creative productions. Performances portray everyday life or fanciful, imaginary places, conveying themes of love, courage, faith, and hope—highlighting the very best in family entertainment.

Our hope is that you would be refreshed, encouraged, and richly blessed by LifeHouse Theater. May we endeavor to care more about value than success, have convictions rather than preferences, and be the evidence of a loving, caring, and forgiving God...to a watching world.

- **Wisdom Teeth Extractions**
- **Orthodontic Extractions**
- **Dental Implants**
- **Oral Biopsies**
- **Facial/Oral Trauma**
- **IV Sedation**
- **General Anesthesia**
- **Nitrous Oxide**

**Phone (909) 798-6600    Fax (909) 798-0028**  
**233 Cajon Street, Suite 4 • Redlands, CA 92373**

Currently, Dr. Chan serves as the president of the California Dental Society of Anesthesiology. He is the immediate past president of the National Dental Board of Anesthesiology. He also was president of the Loma Linda University School of Dentistry Alumni Association. He is a fellow of the American Dental Society of Anesthesiology, a diplomate of the American Dental Board of Anesthesiology, a diplomate of the National Dental Board of Anesthesiology, and a member of the American College of Maxillofacial Surgeons and the American Association of Oral and Maxillofacial Surgeons. He has been the guest editor of the Journal of the California Dental Association. He also teaches at Loma Linda University. His six years of postgraduate training at Loma Linda University included a four-year Oral and Maxillofacial Surgery residency in addition to a two-year Dental Anesthesiology residency.



**[www.ChanOralSurgery.com](http://www.ChanOralSurgery.com)**

---

# LIFEHOUSE THEATER

1135 N. Church St. • Redlands, CA 92374

---

November 5 - 20, 2022

## Noah

**WAYNE R. SCOTT**

*Executive Producer*

*Script, Music and Lyrics by*

**DUSTIN CEITHAMER**

*Inspired by the Biblical Story Recorded in the Book of Genesis*

**MICHAEL MILLIGAN** • *Director / Choreographer*

**JEREMY YEO** • *Music Director*

**TIFFANY MICHEL** • *Costumer*

## The Players

Tyson Blair  
Michael Milligan  
Aaron Yañez  
Jeremy Yeo

Jennifer M. DeWitt  
Kelsey Milligan  
Sarah E. Pearce  
Nicole Prusa

*Based on original concept and staging by Dustin Ceithamer*

---

## NOTICE TO GUESTS

- Kindly refrain from talking. Adults are asked to closely monitor their young children.
- Kindly turn off cell phones and any other modern mechanical intrusions.
- No photography, filming, or recording is permitted without LifeHouse Productions' written consent.
- Kindly keep aisles clear and remain seated during the production.
- No smoking, food, drinks, or gum in the theater.
- Latecomers are seated at usher's discretion only.

# Full Service Accounting & Wealth Management



**Ronald L. Mitchell, CPA**  
**Laura Hood, CPA**  
**David Massongill, Financial Advisor**

❖ Full-service Accounting ❖ Wealth Management  
❖ All Federal and State Tax Returns

222 East Olive Avenue, Suite 1 ❖ Redlands, CA 92373  
909-307-1210 ❖ 909-790-2363 ❖ 909-790-8005

*Securities offered through Securities America, Inc. Member FINRA/SIPC. Advisory services offered through Securities America Services, Inc. Massongill Wealth Management and Securities America are separate entities.*



**Dr. Rick J. Nichols, DDS**  
**Dr. Raelene Fulford, DDS, MSD**

**Dr. Rick Nichols, DDS**

[www.just4kidsdentistry.com](http://www.just4kidsdentistry.com)

Phone: (909) 798-0604

Fax: (909) 798-9765

104 E. Olive Ave  
Suite 200  
Redlands, CA  
92373

## Dolen, Tucker, Tierney & Abraham



*A Professional Law Corporation*  
1710 Plum Lane, Suite A  
Redlands, CA 92374  
[www.redlands-law.com](http://www.redlands-law.com)  
[info@redlands-law.com](mailto:info@redlands-law.com)  
(951) 683-6014 • (909) 217-7688



Raymond  
Dolen



Wayne  
Tucker



James  
Tierney



Rene  
Abraham

### *Our Specialties:*

- Plaintiff Personal Injury
- Bankruptcy / Debt Relief
- Estate Planning
- Probate & Trust Administration
- Public Entity & Business Litigation

---

# SYNOPSIS OF SONGS

---

## **PRE-SHOW**

### **SETTING THE SETTING**

"In The Beginning"  
"Genesis 5:1-2"  
"The Generations of Adam"

### **NOAH WAS A RIGHTEOUS MAN**

"Noah Was a Righteous Man"  
"God Shares Plan"  
"Trust God's Hand"  
"Gopher Wood"

### **MEAN NEIGHBORS**

"We Are The Residents"  
"Mock Noah Anthem"

### **FINDING LOVE?**

### **NICE TO MEET YOU**

"Mrs. Noah's Prayer / Noah Was A Righteous Man"  
"Make Me A Vessel"  
"Trust God's Hand" (reprise)  
"You And Me Together" (medley)

### **TIME PASSES**

"Five O'Clock News"  
"Noah Was A Righteous Man" (reprise)  
"I Want To Know"

## **INTERMISSION**

### **BUILDING AN ARK**

"The Noah Clan"  
"I Want To Know" (reprise)  
"Gopher Wood" (reprise)  
"Seconds Turn To Years"

### **AWARDS AND TROPHIES**

"Mock Noah Anthem" (reprise)

### **BACK TO THE ARK**

"You And Me Together"  
"Seconds Turn To Years" (reprise)

### **MORE AWARDS / MORE TROPIES**

"Mock Noah Anthem" (reprise)

### **THE IMPOSSIBLE CAN COME TRUE**

"I Want To Know" (reprise)  
"Gopher Wood" (reprise)  
"Good Work, My Sons"  
"Two By Two Tango"  
"Wood, Pitch And Nails"  
"Rain, Rain Rain"  
"Faith Medley"

### **LIFE ON THE ARK**

"Seconds Turn To Years" (reprise)  
"We're Gonna Rock, We're Gonna Roll"  
"Sea Sick and Sick Of The Sea"

### **NEW BEGINNING / FINALE**

"Disembark The Ark"  
"New Song"  
"Genesis 9:13-15"  
"Faith Medley" (reprise)

  
Redlands Professional  
HEARING CENTER  
Michael D. Boersen, H.A.D.

Affordable Hearing Aids & Compassionate Care  
*From our Family to Yours!*

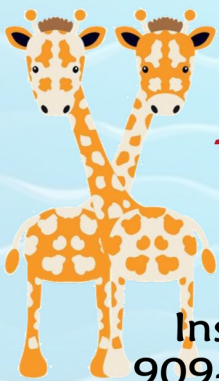


**(909) 792-0074**

[www.redlandshearing.com](http://www.redlandshearing.com)

16 E. Fern Ave. Suite C  
Redlands, CA 92373

Save \$\$\$ on TWO ~ with Burgeson's Bundles!



Family Owned & Operated

**BURGESON'S**  
HEATING • A/C • ELECTRICAL  
SOLAR • PLUMBING

Since 1949



Installation Service Repair  
909-792-2222  burgesons.com

Code:LHT  
State Lic 263871



**Cruises ♦ Land Tours**  
**Vacations ♦ Reunions**

No matter the type of trip you're looking for, Joe & Sandy Ellis can help you plan it. Contact us to explore your next adventure!

Call: 909-855-3612 | Or email: [joe@ellistravelcompany.com](mailto:joe@ellistravelcompany.com)  
Ellis Travel is affiliated with Goldrush Getaways | CST: 2055171-40 IATA: 05765734

**Edward Jones**

> [edwardjones.com](http://edwardjones.com) | Member SIPC

## Compare our CD Rates

Bank-issued, FDIC-insured

1-year

**4.05** %  
APY\*

Minimum deposit \$1,000

2-year

**4.15** %  
APY\*

Minimum deposit \$1,000

3-year

**4.30** %  
APY\*

Minimum deposit \$1,000

Call or visit your local financial advisor today.



**Paul A Mendonca**

Financial Advisor

1690 Barton Rd Suite 101  
Redlands, CA 92373  
909-793-0018

\* Annual Percentage Yield (APY) effective 09/23/2022. CDs offered by Edward Jones are bank-issued and FDIC-insured up to \$250,000 (principal and interest accrued but not yet paid) per depositor, per insured depository institution, for each account ownership category. Please visit [www.fdic.gov](http://www.fdic.gov) or contact your financial advisor for additional information. Subject to availability and price change. CD values are subject to interest rate risk such that when interest rates rise, the prices of CDs can decrease. If CDs are sold prior to maturity, the investor can lose principal value. FDIC insurance does not cover losses in market value. Early withdrawal may not be permitted. Yields quoted are net of all commissions. CDs require the distribution of interest and do not allow interest to compound. CDs offered through Edward Jones are issued by banks and thrifts nationwide. All CDs sold by Edward Jones are registered with the Depository Trust Corp. (DTC).

FDJ-1867K-A © 2022 EDWARD D. JONES & CO., L.P. ALL RIGHTS RESERVED.

# 29TH SEASON



NOVEMBER 5 - 20, 2022



DECEMBER 3 - 30, 2022



JAN. 14 - FEB. 19, 2023



MAR. 4 - APR. 2, 2023



APR. 15 - MAY 14, 2023



MAY 27 - JUNE 25, 2023



JULY 8 - AUG. 6, 2023



AUG. 19 - SEPT. 17, 2023

*TITLES, DATES AND TIMES SUBJECT TO CHANGE*



# LifeHouse Theater

*Making A Dramatic Difference*

## CELEBRATING 29 SEASONS OF MAKING A DRAMATIC DIFFERENCE

In 1993, Wayne Scott incorporated LifeHouse Theater as a non-profit community theater company. 29 years later, the theater has grown into an **Inland Empire attraction**, with an outreach that extends **worldwide**.

**LifeHouse is an award-winning, faith-based theater** guided by historic Judeo-Christian perspectives and values. Throughout these 29 years, LifeHouse Theater has produced over 50 original plays and musicals, adapting some of the most beloved stories from history, literature, and the Bible aimed at a new audience looking for quality entertainment that inspires the moral imagination. Highlights include "Phantom of the Opera," "Ben-Hur," "Beauty and the Beast," "The Hiding Place," "Anne of Green Gables," and "Joseph." Many **Broadway classics** have also been presented at LifeHouse Theater including "The Sound of Music," Disney's "Mary Poppins," "To Kill A Mockingbird," "My Fair Lady," "Seussical," and "Seven Brides for Seven Brothers."

**Unique in the nation**, LifeHouse is an independent, interdenominational theater whose plays and musicals are exclusive, original productions seen by over **30,000 guests** each year. More than **500 volunteer actors** comprise our casts of storytellers and join gifted artists, technicians and support staff from all walks of life to stage redemptive, inspirational stories.

The **outreach of LifeHouse spans the globe** through the **SmartLifeStyle TV** channel as a number of our original productions, as well as the original program "'A New Day' with Dr. Tammy," are broadcast internationally. Additionally, **LifeHouse Theater-on-the-Air** distributes original audio dramas on CDs and through digital downloads. **LifeHouse Scripts** license the scripts of LifeHouse Theater which produced throughout America and in countries all over the world.

LifeHouse Theater makes an **Inland Empire impact** as well, awarding thousands of dollars in **scholarships**, and giving complimentary passes to **charitable organizations** such as the Ronald McDonald House of Loma Linda, Salvation Army, and YouthHope.

A commitment to education continues at LifeHouse Theater through the **LifeTales educational musical biographies** for students, which have been performed for thousands of students and offer a fun, educational field trip opportunity for schools. LifeHouse has also partnered with Michael Milligan to offer the **StageRight and Team Broadway theater and dance classes** for children and adults.

LifeHouse Theater continues to have a strong presence **online**. In addition to our online ticketing site, information for LifeHouse can be found at [lifehousetheater.com](http://lifehousetheater.com), [theaterscript.com](http://theaterscript.com), [lifehouse.tv](http://lifehouse.tv), and [theaterontheair.com](http://theaterontheair.com). LifeHouse is also on social media through FaceBook, Instagram, Twitter, and Pintrest.

**LIFEHOUSE PRODUCTIONS INC.** is a family of creative artists from the Inland Empire. We are committed to producing dynamic, dramatic experiences championing the moral imagination as informed by Judeo-Christian traditions. LifeHouse is an independent non-profit corporation funded by ticket sales and the support of volunteers and community patrons.





---

# MESSAGE FROM THE PRESIDENT

---



Welcome to LifeHouse Theater! We're delighted you have joined us as we launch our 29th season with LifeHouse Productions' splashy original musical.

Today we meet a man and his family who stand out among the ancient true accounts recorded in the Bible.

Scripture observes that some time after man's fall from innocence, "the Lord saw that the wickedness of man was great on earth, and that every intent of the thoughts of his heart was only evil continually" (Genesis 6:5). So God decided to clear the earth of man, beast and fowl through a great flood (vv. 7, 17).

We discover in this account, however, that there was one man who was faithful to the Lord -- Noah (vv. 8 - 9).

Noah experienced what must rank among the loneliest and most difficult challenges entrusted to a biblical patriarch. He is appointed by God for a special task affecting all humanity. And he obediently fulfills his divine calling while flying in the face of human reason. This he does for decades and decades on end amidst the taunts and ridicule of the skeptical. The kind of faith this would require is almost beyond comprehension.


But Noah had long before chosen the path he would take. He had already settled at whose pleasure he lived and served -- regardless of the personal toll. And while Noah's choice to serve God and build an ark came with its cost, it also came with great blessing.

God chose to spare Noah, his family, and some male and female animals of each species (vv. 17- 20). Their lives were preserved in the vast vessel Noah built according to God's specifications (vv. 14 - 16). After the rain stopped and the waters subsided, Noah and company left the ark and stepped into a new world aglow with a rainbow -- a sign of God's promise there will never again be such a flood.

As we mine the humorous aspects of this beloved story, we still see that "Noah walked with God" -- the One whose Son is the true Ark of mankind's ultimate preservation. With this bright promise, we can be at peace while tracing the rainbow in the rain.

Our 29th season is just beginning! Don't miss any of the exciting productions including "Unto Us: The Nativity Story," "Aladdin," "Oliver!," "Anastasia," "The Hunchback of Notre Dame," Disney's "Newsies" and "Daniel." Money-saving season tickets are on sale now at the Box Office.

God Bless...

  
Wayne R. Scott, Founder and President  
LifeHouse Productions, Inc.

BOOKS BIBLES GIFTS APPAREL JEWELRY CARDS MUSIC DVDs



415 Tennessee Street  
Redlands 92373  
(909) 792-2175  
[www.selahchristianstore.com](http://www.selahchristianstore.com)

Your locally-owned, independent Christian store. Follow us on Facebook.

*Law Office of*  
**RK ROBERT KOCHIS**  
Certified Family Law Specialist

Robert A. Kochis

Certified Family Law Specialist

300 East State St., Suite 600 ♦ Redlands, CA 92373 ♦ 909.792.0222 ♦ 909.798.4716  
[WWW.ROBERTKOCHISLAW.COM](http://WWW.ROBERTKOCHISLAW.COM)

**FAMILY LAW ATTORNEY**



**PAINTER  
SMITH &  
AMBERG**  
ESTABLISHED 1982  
MEMBER-FINRA, SIPC

Call (909) 557-2800 or  
1-800-888-7551 or visit us at  
1200 California Street, Suite 220  
Redlands, CA 92374

**Full Service Stock and  
Bond Brokerage**  
**Registered Investment Advisor**

SECURITIES AND INSURANCE PRODUCTS OFFERED ARE NOT INSURED BY FDIC OR ANY FEDERAL GOVERNMENT AGENCY.  
MAY LOSE VALUE. NOT A DEPOSIT OF OR GUARANTEED BY A BANK OR ANY BANK AFFILIATE.

Accounts carried by Wells Fargo Clearing Services, LLC, a division of Wells Fargo Corp.

11/1/16

# PRODUCTION STAFF

Executive Producer.....	<i>Wayne R. Scott</i>
Producer.....	<i>Jeffrey A. DeWitt</i>
Artistic Director.....	<i>Michael Milligan</i>
Production Videography and Photography.....	<i>Mackenzie Marts</i>
Additional Choreography.....	<i>Dustin Ceithamer</i>
Production Assistant.....	<i>Mackenzie Marts</i>
Props .....	<i>Jessica Folkens</i>
Scenic Design .....	<i>Jacob Michel</i>
Scenic Construction .....	<i>Jacob Michel, Luke Michel</i>
Lighting Design.....	<i>Josiah Evans, Zach Michel</i>
Tech Lead.....	<i>Josiah Evans</i>
Lighting & Sound.....	<i>Andrew Brown, Charlie Groza, Josiah Evans, Josh Isom</i> <i>Natalie Krutsinger, Isabella Rodriguez</i>
LifeHouse Publicity and Cast Photographers .....	<i>Jane Cason, Trish Evans, Elizabeth Kelly</i>
LifeHouse Promotional Videos.....	<i>Elizabeth Kelly, Mackenzie Marts</i>
Program .....	<i>Jeffrey A. DeWitt</i>

We wish to thank the many others “behind the scenes” who so graciously and generously give of their time to make our productions possible throughout the year.

**LifeHouse Theater would like to acknowledge the following churches represented in our cast:**  
Fellowship Church • The Grove Community Church • Sandals Church East Valley

## BOX OFFICE

1135 N. Church Street • Redlands, CA 92374 • (909) 335-3037

lifehousetheater.com

### Phone Reservations

Tues. - Fri.: 1pm - 5:30pm

### Lobby Hours

Fri: 1pm - 6pm

Weekends: 1 hour prior to performance and open throughout performance.

Founder/President / Executive Producer .....	<i>Wayne R. Scott</i>
Vice-President .....	<i>Dr. Tammy Bradshaw-Scott</i>
General Manager / Producer .....	<i>Jeffrey A. DeWitt</i>
Artistic Director .....	<i>Michael Milligan</i>
President's Secretary / Volunteer Coordinator .....	<i>Jennifer Keeney</i>
Financial Coordinator .....	<i>Debbie Rao</i>
House Management .....	<i>Liz Boone</i>
Director of Advertising .....	<i>Joe Ellis</i>
Resident Prop Coordination .....	<i>Jessica Folkens</i>
Guest Relations .....	<i>Janna Redmond, Michelle Ruiz, Nancy Thorp</i>
Special Projects .....	<i>Aaron Milligan, Johanne Scott</i>

LIFEHOUSE ADVISORY BOARD: Wayne R. Scott, Dr. Tammy Bradshaw-Scott,  
Dr. Gary and Valerie Chan, Greg Franklin, Adam Groza,  
Mary Lynn Mollner, Zach Tucker, Jeremy Yeo (Cast Liaison)

## LIVE YOUR VALUES

- Individual, family, and couples therapy for all ages
- Psychological testing and evaluations
- In-person and telehealth appointments available



2900 Adams Street, Suite C-10  
Riverside, CA 92504

Office: 951.552.8137  
[www.psychservicesriverside.org](http://www.psychservicesriverside.org)

## Maupin's Money Maxim:

- *Spend less than you earn*
- *Save all you can*
- *When in doubt... Call me!*



*Maupin Financial Services*  
*David O. Maupin, CFP®*  
*LPL Registered Principal*

*Securities and advisory services offered through LPL Financial.*  
*A registered investment advisor, member FINRA/SIPC.*

310 East Citrus Avenue. Redlands, CA 92373

CALL FOR MORE INFORMATION:

**(909) 798- 1712**

# HELP US CHANGE A LIFE THROUGH THE ARTS

Your contribution helps ensure the Inland Empire will continue to have a theater that is committed to inspiring the minds of individuals, both young and old, by presenting artistic endeavors that inspire the human spirit. Join with others in our Family of Donors who have a vision for using the fine arts to make a difference.

<b>Producer's Circle:</b>	<b>\$10,000 &amp; Above</b>	<b>Actor's Circle:</b>	<b>\$700 - \$999</b>
<b>Playwright's Circle:</b>	<b>\$7,000 - \$9,999</b>	<b>Patron's Circle:</b>	<b>\$300 - \$699</b>
<b>Director's Circle:</b>	<b>\$4,000 - \$6,999</b>	<b>Friend's Circle:</b>	<b>\$100 - \$299</b>
<b>Artist's Circle:</b>	<b>\$1,000 - \$3,999</b>		

*Mail Your Investment to:*

LifeHouse Theater, 1135 N. Church St., Redlands, CA 92374 or call (909) 335-3037

## PRODUCER'S CIRCLE

*Anonymous Gary & Valerie Chan Dr. Hefsiba and Dr. Rodgir Cohen Dave & Robin Maupin*

## PLAYWRIGHT'S CIRCLE

*Anonymous*

## DIRECTOR'S CIRCLE

*Anonymous Dale & Kim Folkens Robert & Linda Rosenquist Redlands Community News -  
Julie R. Carlson Janna K. Redmond Mike & Myriam Trementozzi Jerry Bean*

## ARTIST'S CIRCLE

*Anonymous Ed & Beth Derry Timothy & Jamie Mahoney Colossians 3:23  
Rick & Tina Arias Mr. & Mrs. Diliberto The Manson Family In Memory of Matthew Schrader  
Kristen Suzanne Atkinson Ken & Suzy Douma Tina McClellan Lewis & Johanne Scott  
Hayne & Rochelle Baucom Joe & Sandy Ellis Marty & Susy McLeod Jan Sherman  
Bart & Ruth Bliss Theophilus Scott & Mary Lynn Mollner Sue Stuedemann  
Steve & Liz Boone The Franklin Family The Monsma Family Rich & Laural Tubbs  
Peggy Bryson The Gatons Family Phil & Carol Naylor Neil & Grace Valkenburg  
The Bushey Family David Roy Hurley Judy Powers Ralph & Pat Watts  
Katrina Marie Cavarno-Cherns Anne Jackson Bruce & Candace Quinn Dr. Bob & Sheila Wines  
Jeff & Jennifer DeWitt Rich & Char Lampe RB Foundation William, Sally & Austin Ziprick*

## ACTOR'S CIRCLE

*Anonymous George & Frankie Fikrie Kevin & Susan Jetton Larry & Carol Payne  
Regan Bliss*

## PATRON'S CIRCLE

*Anonymous Rich Durant Mark Perrenoud & Family Bruce & Beth Smith  
Bill & Betty Jane Born Amy Muthersbaugh Evans Philippe Perrenoud & Family Daphne Sterling & Family  
Jean Burgdorff Jessica Folkens John Potter Steve & Pat Timboe  
Raul & Tonia Caraveo Priscilla George John & Johanna Rajca Paul & Zane Williamson  
Bill & Linda Chatt Gary & Denise Harriford Frank & Sandy Rich Bill & Dianne Wood  
Justin & Amanda Chao Paul & Teresa Hert Mark & Darcelle Seller*

## FRIEND'S CIRCLE

*Anonymous Lory & Nelson Ely Kenneth & Priscilla Newman Roger Tillman  
Maria R. Anderson The English Family Shirley Proch Zach, Berangere & Sophia Tucker  
Donna Marie Becker The Flores Family The Mark See Family Ruthemma & David Wells  
Willie & Jackie Behrends Arthur Gallegos Raymond & Dyone Shelden Craig & Donna Zuppan  
Don Bell Major Mrs. Glen Gilden Lucas & Heather Spelman  
Manna-Fest Fellowship Claire Juliette In Memory of Lorrie Stirling  
Richard L. & Brenda Durant Jim & Sue Korfanta Dan & Dawn Tan*

(As of October 2022)

# UPCOMING AUDITIONS

Auditions are held at LifeHouse Theater, 1135 N. Church St. in Redlands from 6 - 9 pm on a first come-first served basis. Parking is available behind the theater. Auditioners should be at least 10 years of age and have a recent photo of themselves and a theatrical resume to leave with the audition panel.

Please come to the audition prepared to sing 16 bars of the song of your choice, making sure to bring sheet music in the correct key. **\*For dramas, please prepare a dramatic monologue no more than one minute in length.** Roles are open for both men and women, all season long. Men are especially encouraged to audition. LifeHouse Theater is a service organization and we hope you'll consider devoting your time and talent to serve our community through the arts. *(Dates and Titles Subject to Change.)*

Aladdin.....November 10, 2022	The Hunchback of Notre Dame....March 23, 2023
Oliver.....December 8, 2022	Newsies.....April 20, 2023
Anastasia.....February 9, 2023	Daniel.....June 15, 2023

orthodontics by  
Byron E. Diehl, DDS, MS



Call Us for Your  
Complimentary  
Consultation

104 E. Olive Avenue, Ste 204  
Redlands, California 92373

[diehlorthodontics.com](http://diehlorthodontics.com) 909.793.2827

## Securing Peace of Mind Today for Tomorrow



Kathleen B. Albrektson

1801 Orange Tree Lane,  
Suite 230  
Redlands, CA 92374  
(909) 335-9658

**AS ALBREKTSON & SHUMATE LLP**

Estate Planning, Probate,  
Trust Administration,  
Estate Litigation, Bankruptcy &  
Small Business Planning



Voted best  
attorney &  
best law  
firm since  
2011!



Christopher A. Shumate

(909) 335-9658  
[www.AibShuLaw.com](http://www.AibShuLaw.com)

Albrektson & Shumate LLP is  
federally defined as a debt relief agency.

# Noah Word Search

S Z M R Z Q X G E N E S I S D  
Z C J E W V O S O Z G P I Q Z  
U R M P I T C H Q N O A H Z F  
O D U S E A S I C K D O V E L  
N F T U Q B P H W A T H I D S  
R A I N B O W B P K C K W H W  
B A P Y R N A N I M A L S M B  
Z R R D I A K E L F A I T H Y  
S K P W G I C A K X F W O O D  
N L R N H L S X J Y C D F L H  
I T O K T F I H T C U C L S K  
Q M M Q E Y M V E L B X O D D  
B Y I K O Z H A M M I H O X J  
V E S O U Q P G T O T F D G L  
C E E Q S I J A P H E T H Z M

Noah

Ark

Genesis

Flood

Cubit

Animals

Rainbow

Righteous

Seasick

Japheth

Nail

Faith

Shem

Pitch

Promise

Ham

Wood

Dove



# BRIGGS — AND — COOPS

COINS · GOLD · SILVER · CURRENCY & STAMPS



PROUDLY SUPPORTING LIFEHOUSE THEATER

WE BUY AND SELL GOLD, SILVER, COINS,  
STAMPS, CURRENCY, AND SCRAP JEWELRY.

[www.CoopsCoins.com](http://www.CoopsCoins.com), 909-792-2511  
21 E. Redlands Blvd. Redlands CA